





Flat 8, 3 Plaistow Lane, Bromley, Kent BR1 4DS
£375,000 - Leasehold



PROPERTY DESCRIPTION

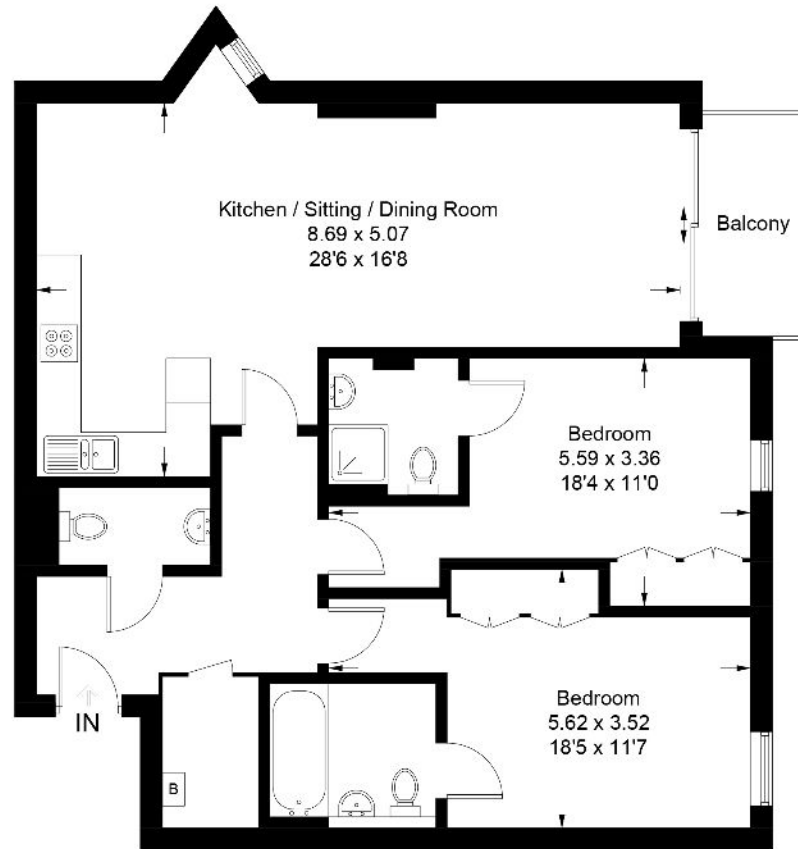
CHAIN FREE A simply stunning 960 ft², two double bedroom, second-floor apartment located in the sought after Sundridge Park Village, Bromley, BR1. The property benefits from access to multiple bus routes and being just a short walk from Sundridge Park Station and High Street. Constructed in 2015 and benefitting from the remainder of a 10-year NHBC warranty; the property is modern and provides two double bedrooms, both with an ensuite and a separate cloakroom W/C. There is an open plan Kitchen/Dining/Living room with a contemporary kitchen containing fitted appliances and ample space for freestanding furniture throughout. There is a private balcony overlooking Plaistow Green, a communal lift and a secure-gated, allocated parking space to the rear. Call us now for more information, we are ***Open 8 am - 8 pm 7 Days a Week***

POINTS OF INTEREST

- SECOND FLOOR APARTMENT
- TWO DOUBLE BEDROOMS
- TWO EN-SUITES & A CLOAKROOM W/C
- GATED ALLOCATED PARKING SPACE
- SUNDRIDGE PARK STATION 0.2 MILES AWAY
- CHAIN FREE



Approximate Gross Internal Area = 89.2 sq m / 960 sq ft



Second Floor

This plan is for layout guidance only. Not drawn to scale unless stated. Windows and door openings are approximate. Whilst every care is taken in the preparation of this plan, please check all dimensions, shapes and compass bearings before making decisions reliant upon them. (ID839284)
www.bagshawandhardy.com © 2022

| Energy Efficiency Rating | | Current | Potential |
|---------------------------------------------|----------|-------------------------|-----------|
| Very energy efficient - lower running costs | | | |
| (92-100) | A | | |
| (81-91) | B | 82 | 82 |
| (69-80) | C | | |
| (55-68) | D | | |
| (39-54) | E | | |
| (21-38) | F | | |
| (1-20) | G | | |
| Not energy efficient - higher running costs | | | |
| England, Scotland & Wales | | EU Directive 2002/91/EC | |