



platformproperty  
estate agency evolved





**Flat 1, 22 Grosvenor Place, Station Road, Whyteleafe, Surrey CR3 0EP**  
**£400,000 - Leasehold**



## PROPERTY DESCRIPTION

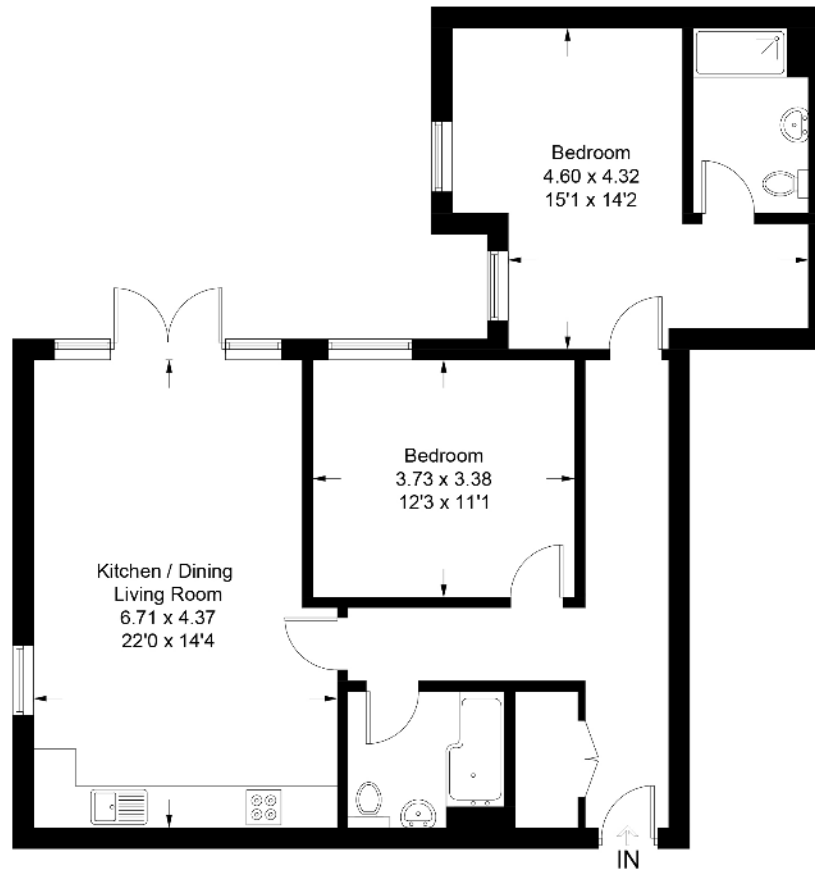
An extremely well presented modern two double bedroom ground floor apartment. This outstanding property is centrally located in Whyteleafe, CR3 and benefits from two double bedrooms, two contemporary bathrooms including an ensuite, a bright kitchen/living room, a private garden/patio area and secure allocated parking. Call us now for more information, we are \*Open 8am - 8pm, 7 Days a Week\*

## POINTS OF INTEREST

- MODERN GROUND FLOOR APARTMENT
- TWO DOUBLE BEDROOMS
- TWO BATHROOMS
- GARDEN
- OPEN PLAN KITCHEN/DINER
- ALLOCATED PARKING SPACE
- UPPER WARLINGHAM STATION 1 MINUTE WALK



Approximate Gross Internal Area = 83 sq m / 893 sq ft



## Ground Floor

This plan is for layout guidance only. Not drawn to scale unless stated. Windows and door openings are approximate. Whilst every care is taken in the preparation of this plan, please check all dimensions, shapes and compass bearings before making decisions reliant upon them. (ID917130)